



Chicago Contractor's Supply

The Leading Distributor of Quality Concrete Forming Products

Bellwood 708-547-5170
Frankfort 815-900-2441
Huntley 847-669-1188
Naperville 630-615-2170

Tools

Drills
Impact Wrenches
Circular Saws
Sawzalls
Hammer Drills
Rotary Hammers
Grinders
Miter Saws
Band Saws
Chop Saws
Vibrators

Tool Accessories

Saw Blades
Diamond Blades
Carbide Blades
Sawzall Blades
Hammer Steel
Abrasives
Diamond Tools
Impact Sockets
High Speed Bits
Wood Boring Bits
Wire Cups
Hole Saws

Pneumatic Tools

Framing Nailers
Impact Wrenches
Breaker Hammers
Rock Drills

Powder-Actuation

Single Shot Guns
Strip Load Guns
Disc Load Guns
Powder Loads
Pins

Power Equipment

Air Compressors
Generators
Concrete Mixers
Plate Compactors
Water Pumps
Pressure Washers
Rammers
Vibrators
Lighting Towers

Concrete Saws

Handheld Saws
Soft-Cut Saws
Abrasive Blades
Diamond Blades

Finishing

Screed Machines
Power Trowels
Power Sprayers
Concrete Blankets
Trowel Blades
Vibrators

Forming

Formboard
Wood Stakes
Metal Stakes
Screed Stakes
Sonotube
Beadboard
Snap Ties
Form Ties
Rebar Benders
Rebar Caps
Safety Rails
Coil Rod
Coil Nuts/Bolts
Coil Ties
Coil Couplers
Wedges & Shims
Formliners

Cement Tools

Trowels
Floats
Edgers
Groovers
Darbies
Rollers
Jointers
Tampers
Handles
Adapters
Cement Brooms
Stamps

Drainage

Pipe
Fittings
Filter Fabrics
Trench Drains
Basins
Grates

Curing

Curing Compound
Finishing Aid
Concrete Blankets
Heaters
Plastic Sheetting

Fasteners

Anchor Bolts
Bulk Nails
Bulk Screws
Decking Screws
Nuts/Bolts
Washers
Lag Bolts
Threaded Anchors
Wedge Anchors
Drop-in Anchors
Collated Nails

Framing Hardware

Anchor Bolts
Beam Hangers
Straps
Plates
Seismic Anchors
Wall Bracing
Shear Wall
Embedments
Column Caps
Column Bases

Hand Tools

Tape Measure
Chalk Lines
Marking Tools
Hammers
Saws
Pliers
Wrenches
Screwdrivers
Knives
Levels
Speed Square
Roofing Square
Clamps
Nut Drivers
Bolt Cutters

Landscaping

Shovels
Posthole Diggers
Wheelbarrows
Scrapers
Rakes
Lutes
Sprayers
Hoses
Augers

Striking Tools

Framing Hammers
Sledge Hammers
Digging Bars
Wrecking Bars
Post Mauls
Picks

Tilt-Up

Inserts
Lifting Hardware
Bond Breakers
Lifting Clutch
Pipe Braces
Anchors
Shim Packs
Formliners

Sealants/Caulks

Latex Caulks
Silicone Sealants
Urethane Sealants
Self-Leveling Sealants
Foam Sealant
Caulking Guns
Bulk Caulk Systems
Polysulfide Sealant
Joint Control
Backer Rod
Expansion Joint
Bender Board
Joint Cap
Polyfelt
Keyway

Waterproofing

Hydraulic Cement
Crystalline Sealers
Foundation Coating
Roof Cements
Drainboard
Liquid Membranes
Sheet Membranes
Waterstop

Fireproofing

Fire Barrier Caulks
Fire Barrier Spray
Moldable Putty
Wrap Strips
Mineral Wool
Composite Sheets
Safety Insulation

Bar Support

Wire Mesh
Tie Wire
Tie Wire Reels
Bar Ties
Bar Chairs
Slab Bolster
Beam Bolster
Taper Dowels
Dowel Baskets
Dowel Sleeves
Speed Dowels
Dowel Bars

Bridge Decks

Overhang Brackets
Pres-Steel Hangers
Adjustable Hangers
Coil Rod Hangers
Combination Hangers
Screed Support

Precast

Anchors
Inserts
Lifting Hardware
Wire Products
Plastic Accessories

Chemicals

Epoxies
Cures
Form Releases
Sealers
Strippers / Cleaners
Bond Breakers
Bonders

Cements

Grouts
Patches
Hardeners
Repair Mortars
Sealers
Toppings
Underlayment
Primers
Concrete Mixes

Decorative

Color Hardeners
Color Stains
Color Dyes
Overlays
Color Release
Finishing Aid
Pattern Stamps

Safety

Hardhats
Safety Glasses
Ear Plugs
Dust Masks
Respirators
Fall Equipment
First Aid Kits
Caution Tape
Barricades
Safety Cones
Flags
Rebar Caps
Warning Signs

Supplies

Gloves
Knee Pads
Tool Belts
Water Coolers
Work Boots
Ladders
Tape
Strapping
Batteries
Chain – Bulk
Hoists
Trash Cans
Trash Bags
Brooms
Brushes
Vacuums
Floor Protection
Buckets
Ropes
Heaters
Fans
Flashlights
Lubricants
Rain Gear
Tarps
Calculators
Painting Supplies
Straw
Visqueen
Sand Bags
Truck Boxes
Job Boxes
Padlocks
Debris Chutes

Foundations

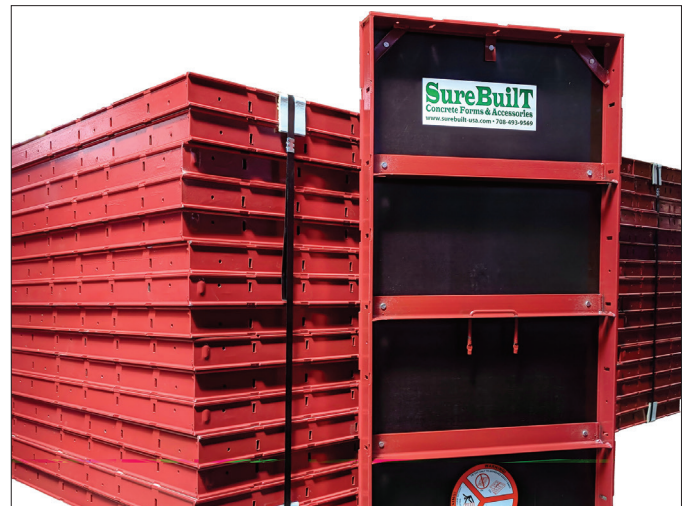
Windows
Window Bucks
Areawells
Areawell Ladders
Grates

Now featuring the SurePly system!

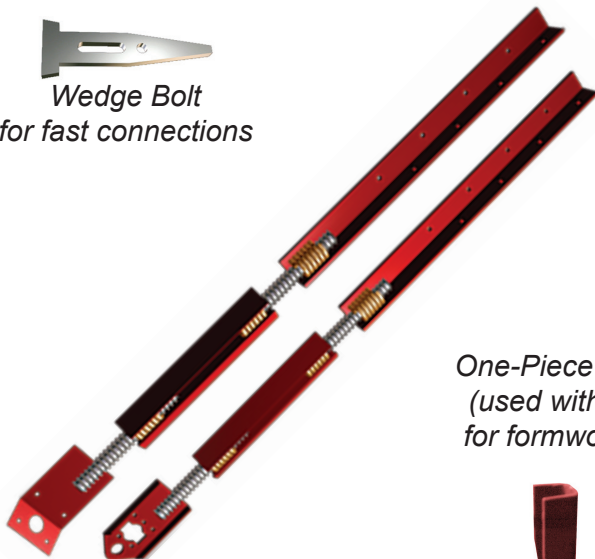
Two 2x8 panels are equal to the contact area of a 4x8 sheet of plywood, yet the SurePly forming system can be moved, placed, tied, poured and stripped 75% faster than job-built plywood forms.

Small or large projects, simple or cut-up layouts, and handset or gangform applications, will benefit from these SurePly labor-saving features:

- High-carbon 55,000 PSI structural steel frame
- Rugged frame with 45% more weld than others
- Full 2" crossmember support angle every foot
- Allowable 1,000 psf load-rated system
- Added dado slots make step footings easy
- Integral handle for carrying and setting
- Baked-on powder paint in 12 optional colors
- Long-lasting 1/2" Birch or optional HDO plywood
- Panels in heights from 3' to 10', width 24"
- Fillers in heights from 3' to 10', widths 1" to 22"
- Inside corners in heights from 3' to 10', 6"x6" size
- Simple hardware for faster assembly

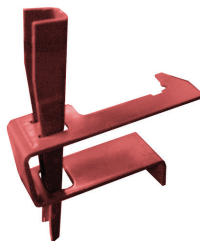


*Wedge Bolt
for fast connections*



*One-Piece Waler Clamp
(used with 2x4 lumber)
for formwork alignment*

*HD Turnbuckles
(used with 2x4 lumber)
for plumbing forms*



HD Loop Tie



X-Flat Tie



Base Tie