



**Contractor  
Equipment &  
Supply**

***The rental equipment you need... for the job you have!***



**Handset Forming**



**Column Forming**



**Deck Forming**



**Gangforming**



**Bracing**



**And More!**



## SurePly™ Forming System

The most economical, versatile and efficient way of forming small and large projects, cut-up or complicated jobs, handset or gangform applications.

- Rugged frame with 45% more weld than others
- High-carbon 55,000 PSI structural steel frame
- Full 2"x2" crossmember support angle every foot
- Integral handle for carrying and setting
- Baked-on powder paint in 12 optional colors
- Long-lasting 1/2" Birch or optional HDO plywood
- Allowable 1000 psf load-rated system
- Panels in heights from 3' to 10', width 1" to 36"
- Fillers in heights from 3' to 10', width 1" to 36"
- Column forms in heights from 3' to 10', width 30"
- Minimal hardware for maximum productivity



*SurePly is a trademark of SureBuilt Concrete Forms and Accessories, Bellwood, IL.*



Wedge Bolt  
for fast connections



Turnbuckles  
(used with lumber)  
for plumbing forms

One-Piece Waler Clamp  
(used with lumber)  
for formwork alignment



HD Loop Tie



X-Flat Tie



Base Tie



SurePly Panel (6' size)

## Aluminum Beam Gang Forming System

The Aluminum Beam Gang system is an easy-to-build, easy-to-use, easy-to-handle gangform. This high-strength system is a combination of 3/4" plywood, aluminum beams, walers and taper ties. Aluminum beams allow wider waler spacing, reducing the number of taper ties required. The 4'x8' plywood reduces form seams, providing a smoother, better-looking concrete appearance. The system can transition to SurePly handset panels, to complete forming details, like corners and pilasters.



## Rapid Clamp™ Forming System

The Rapid Clamp system is a high-strength gangform designed for larger concrete pours. The system is rated at 1,250 psf allowable pressure and weighs approximately 13 lbs./sq. ft. in a gang configuration. Panels are available in a variety of sizes up to 3 meters (9'-9"), joined by hand-operated lever clamps. The system can transition to SurePly handset panels, to complete forming details, like corners and pilasters.

*Rapid Clamp is a trademark of Dayton Superior Corporation, Dayton, OH.*



## Pipe Bracing

**Adjustable Pipe Braces** have a telescoping pipe, 6" threaded rod for adjustment and connecting shoes. There are three sizes ranging from 7'-6" to 40'-0".

**Fixed Pipe Braces** have a fixed length, 18" threaded rod for adjustment and connecting shoes. There are four sizes, including extensions, ranging from 16'-6" to 32'-9".

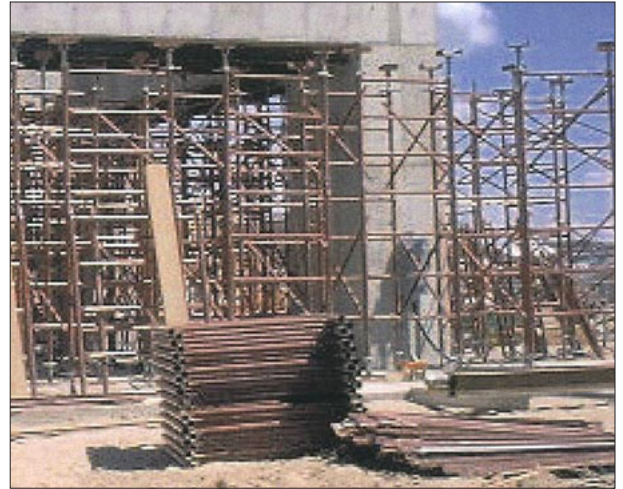
**HD Fixed Pipe Braces** have a large diameter pipe for higher capacity, 18" threaded rod for adjustment and connecting shoes. There are six sizes, including extensions, ranging from 31'-9" to 62'-6".



## SureLoad™ Shoring System

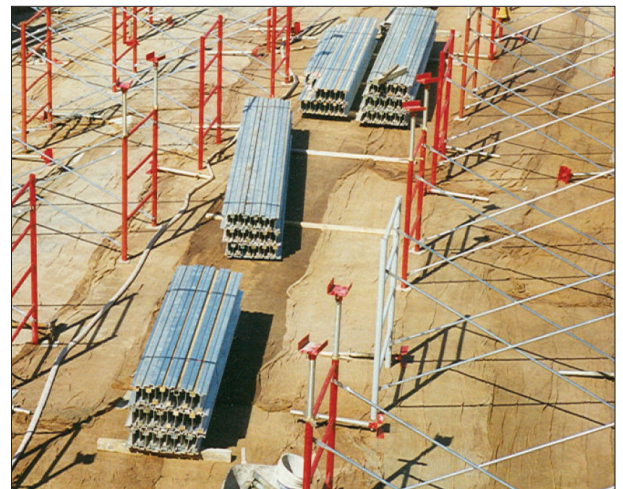
This shoring and deck support system is designed for an optimum strength-to-weight ratio, with a load-tested rating of 10K leg. The system components include frames, screw jacks, crossbraces, U-heads and coupling pins. The frame heights are 3', 4', 5' and 6', and the widths are 2' and 4'. The system is quickly assembled and easily reconfigured for a wide range of shoring and deck support applications.

*SureLoad is a trademark of SureBuilt Concrete Forms and Accessories, Bellwood, IL.*



## Aluminum Beams

Aluminum beams are lightweight, high-strength component that can often be handled by one workman. The beams are available in several sizes, including 6', 8', 10', 12', 14' and 18' lengths. Aluminum beams have a 2"x2" nailing strip in the top flange for fastening plywood decking and a clamping channel in the bottom flange for fastening U-heads or stringers. The beam height of 6-1/2" matches most other existing brands.



## Post Shores

Post Shores can be used for supporting deck joists or reshoring existing structures. The Post Shore 350 ranges in height from 6'-6" to 11'-5" with a safe working load of 6,445 to 4,400 lbs. The Post Shore 550 ranges in height from 11' to 18' with a safe working load from 8,176 to 2,732 lbs. A telescoping tube provides the rough height adjustment, in 3" increments, using a captured pin. A threaded collar provides the fine height adjustment, in a 4" range, using a pivoting handle. The Post Shore also includes a Quick-Release feature so it can be easily removed, relocated and reused.



## Circular Steel Column Forming

Steel column forms are easy to assemble, strip, clean and reuse. Two identical steel forms are quickly bolted together to create a round column form. The steel form surface produces a smooth concrete appearance and reduces cleaning. Steel column forms are available in a wide range of sizes, including diameters up to 60" and heights up to 8', to match almost any column requirement.



## SpaceLift™ Jump Forming System

This engineered jump system is used on shear wall forming applications. The system consists of a frame, carriage assembly, support shoes and walkway brackets. The frame adapts to a wide range of forming systems and spacings. The system is held on the wall by a jump shoe anchored in the concrete and tied back to a trailing shoe to resist wind loads. The platform provides a large work deck, even when the gangforms are rolled back.

*SpaceLift is a trademark of Dayton Superior Corporation, Dayton, OH.*



## SureCore™ Self-Riser Forming System

The self-riser system design allows you to form high-rise concrete cores faster and more efficiently. Completely self-sufficient, the integrated hydraulic system forms each level of the building core without the tower crane. The core can advance independent of other construction activities, making the overall project more efficient.

*SureCore is a trademark of SureBuilt Concrete Forms and Accessories, Bellwood, IL.*



## *Ask about other ways to save...*

**Bridge Overhang Brackets** – Brackets and hangers provide an efficient deck forming solution for precast concrete or steel I-beam bridge structures.

**Coil Ties** – 2-Strut and 4-Strut designs, in standard and heavy-duty capacities, with optional cones, waterseal or custom combination, for job-built forming.

**Euro Ties and Hardware** – 15mm and 20mm taper ties and she-bolts, with flat washers and wing nuts, are compatible with European-brand forming systems.

**Form Saver** – Threaded rebar coupler design eliminates the hazard of protruding rebar and the cost of form face replacement, while maintaining reinforcement integrity.

**Metal Rib** – Leave-in-place, expanded galvanized mesh to form footings, bulkheads, grade beams, pier caps and blindside walls.

**Snap Ties** – Snap ties and brackets, with  $\frac{3}{4}$ " plywood and 2x4 lumber, create a simple and effective plywood forming system.

**Staybox** – A pre-engineered and pre-assembled rebar keyway assembly that simplifies forming at wall and deck intersections.

**Stud Rail** – A reinforced column-to-deck connection that reduces shearing, transfers load further into the slab and eliminates column capitals.

**Taper Ties and Hardware** – High-capacity taper ties, with flat washers and wing nuts, spread the tie spacing and reduce the number of ties needed for gangforming.

**Walers** – Double channel steel walers turn everyday panels into gangform systems to maximize concrete forming productivity.



**Contractor  
Equipment &  
Supply**

840 South 25th Avenue  
Bellwood, IL 60104  
708-547-5170  
[www.ccs-ces.com](http://www.ccs-ces.com)