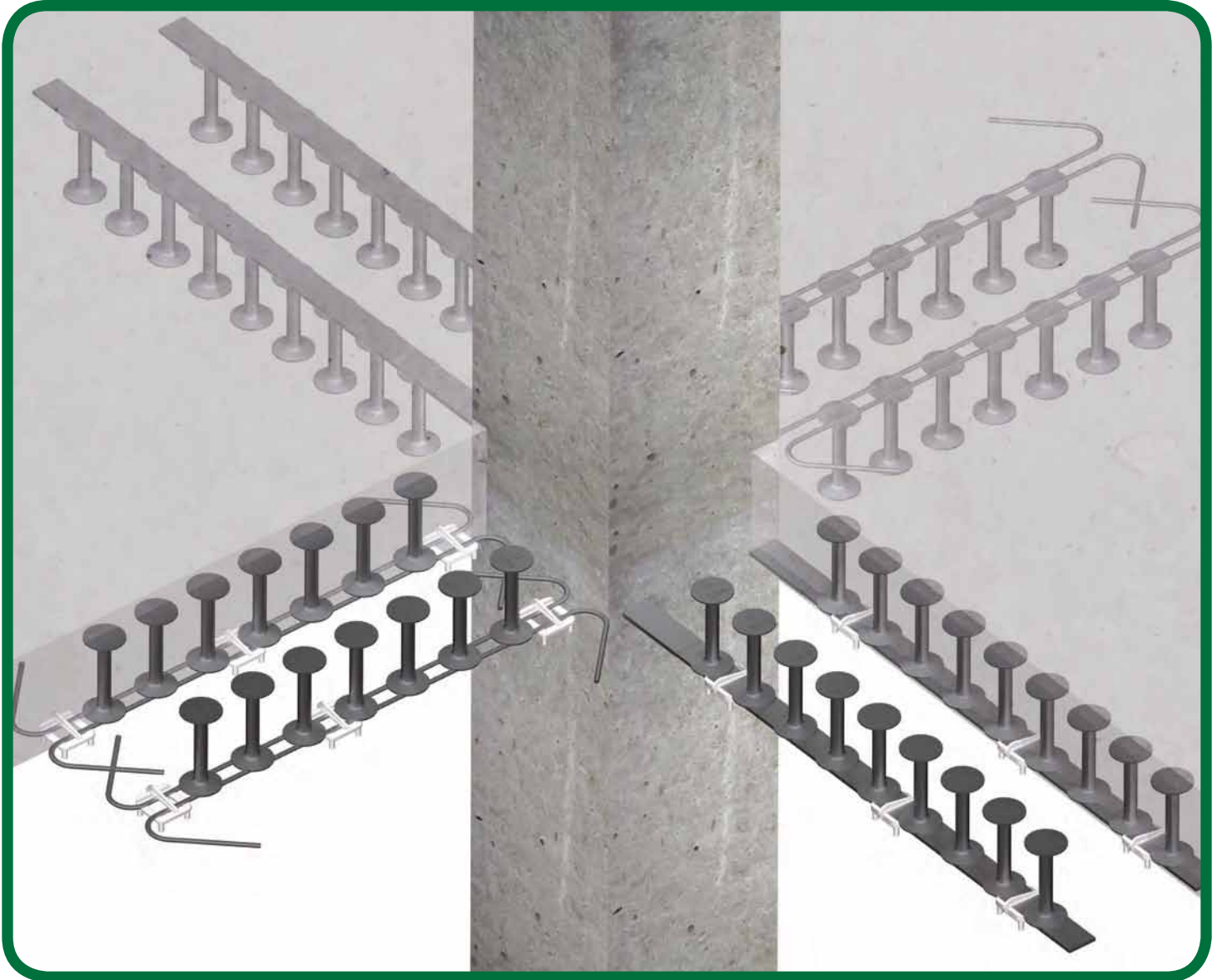


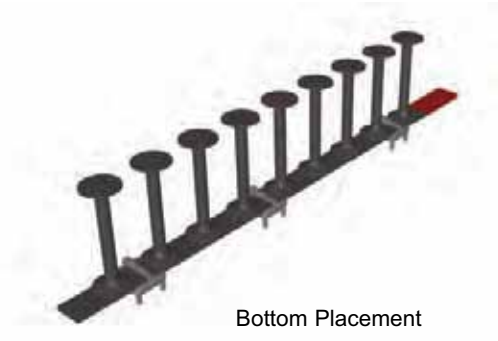
SureBuilt Manufacturing



DSA
Double Headed
Shear Reinforcement

Double Headed Shear Reinforcement

DSA Shear reinforcement is generally used in slab to column and footing connections to resist the punching shear in the slab and transfer the concentrated loads further into the slab to create a larger shear area around the column. (Avoid capital heads and drop heads around the column).



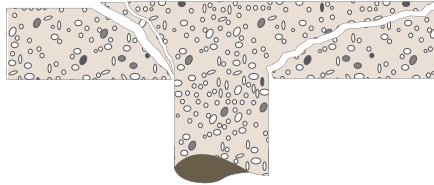
Bottom Placement



Top Placement

DSA Shear Reinforcement Specification A-1044

This specification covers steel stud assemblies for shear reinforcement in concrete. The stud assembly consists of double – headed studs attached to a steel shape (wires or strip). The steel shape (wires or strip) is sufficiently stiff to hold the studs in the appropriate location, direction and spacing until the concrete is cast in accordance with the latest update of the standard specification for steel stud assemblies for shear reinforcement of concrete ASTM A-1044 (test report available).



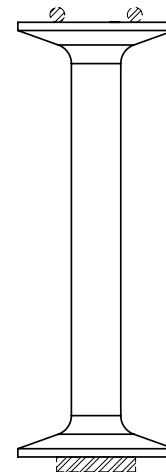
Punching Shear Failure Mode



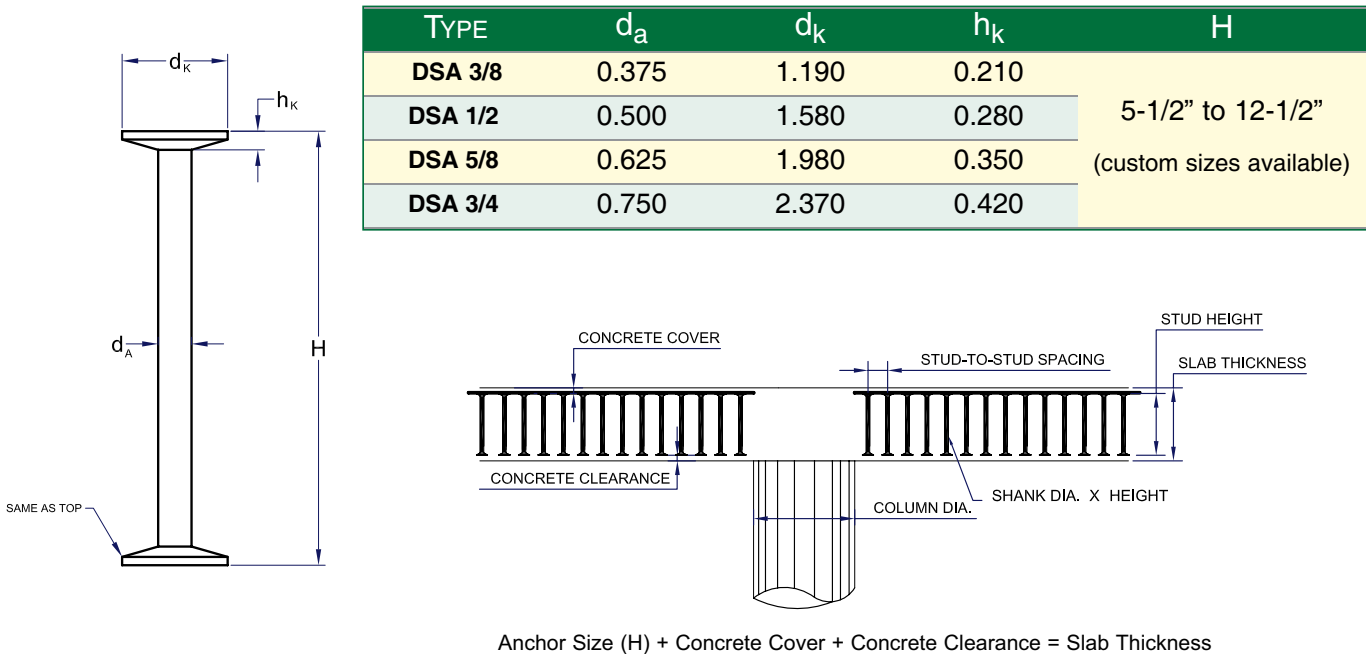
DSA Reinforced Column

DSA Features

- ▶ Top and bottom load transfer from the head is the same
- ▶ DSA is manufactured at certified location
- ▶ Strip and wires are for positioning and spacing only and can be assembled at any location per design drawings
- ▶ No additional structural welding to strip or wire (no additional certified welding locations)
- ▶ Cost effective - less installation time, labor cost saving
- ▶ Preferred standard used worldwide
- ▶ Made in The USA

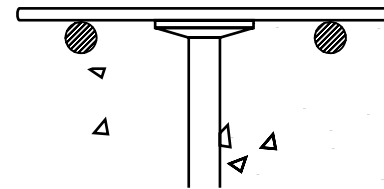


Anchor Specification



Installation

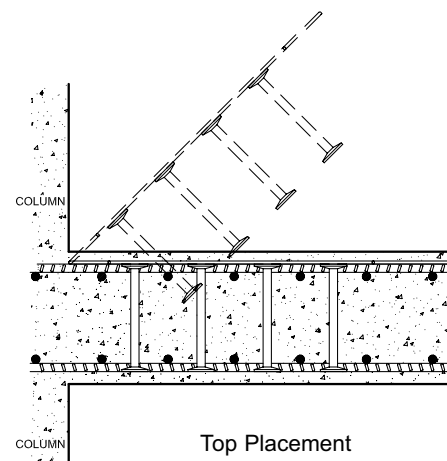
- ▶ DSA shear reinforcement can be placed around the columns before or after the structural reinforcement or p/t tendons are placed
- ▶ Strip or wire can be easily placed on top of structural reinforcement
- ▶ DSA maintain correct position of the head in plane with the rebar cover
- ▶ DSA shear reinforcement is supplied to the job ready to install with proper dimensions, assembled and color-coded. Can be installed in few minutes providing significant reduction in installation time and labor cost
- ▶ DSA must be placed according to the drawings and guidelines provided by SureBuilt Manufacturing and/ or the engineer on record of the project for correct placement
- ▶ Engineering software available



Head Position - Top & Bottom



Standard Positioning



Top Placement

Plastic Chairs For DSA

- ▶ Chairs maintain the proper concrete cover
- ▶ Easy clip on spacer
- ▶ Available in sizes: 3/4" 1", 1-1/4", 1-1/2, 2"
- ▶ Clip on strip or double positioning wire
- ▶ Patent pending



DSA CHAIRS	
Part#	Size
DSAC34	3/4"
DSAC1	1"
DSAC112	1-1/2"
DSAC2	2"

Dealer: